

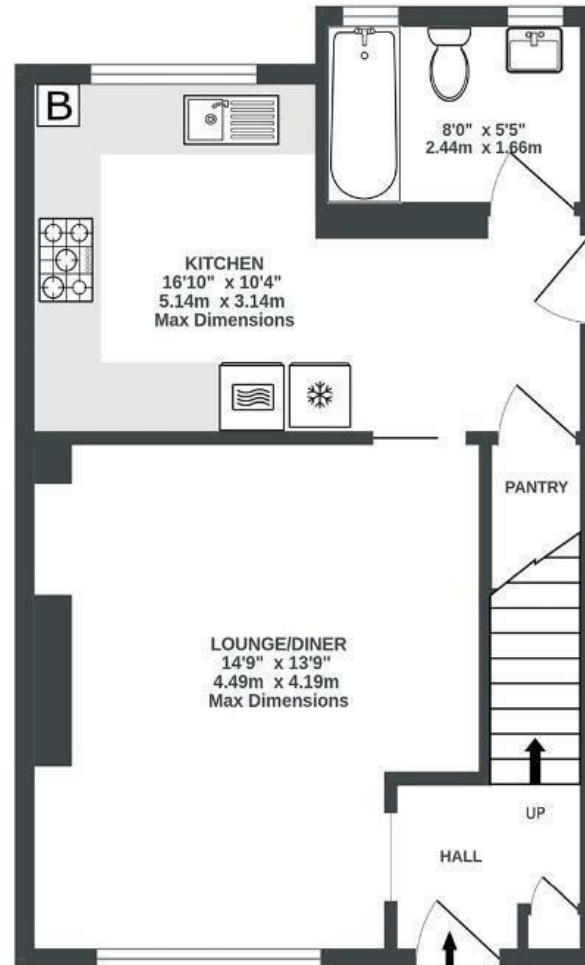
Marksbury Road

BEDMINSTER

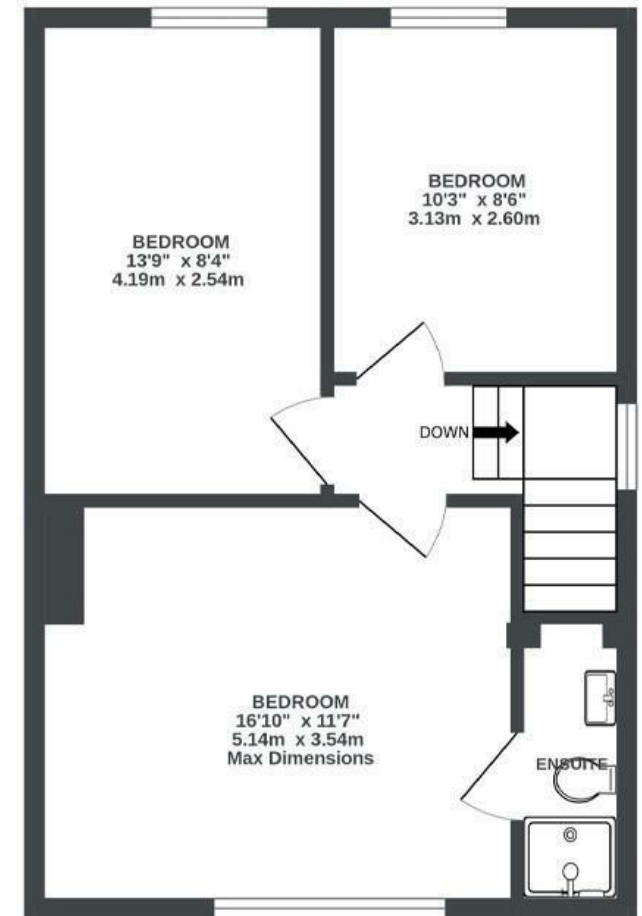
APPROXIMATE FLOOR AREA
83 SQM / 893 SQFT



GROUND FLOOR
457 sq.ft. (42.5 sq.m.) approx.



1ST FLOOR
436 sq.ft. (40.5 sq.m.) approx.



Illustrations are for reference purposes only, measurements are approximate, not to scale.

Boardwalk

Marksbury Road , BRISTOL

£

£425,000



BS3 5JY

zzz

3 Bedrooms



2 Bathrooms

"Our favourite aspects of the house is our large, south-facing garden and the 15-minute cycle into the city centre. Along with it's great location, a huge asset is the off-street parking and wide side access giving the feeling of immense space and making it a more accessible home. All bedrooms are generously sized and the house contains two bathrooms"

